

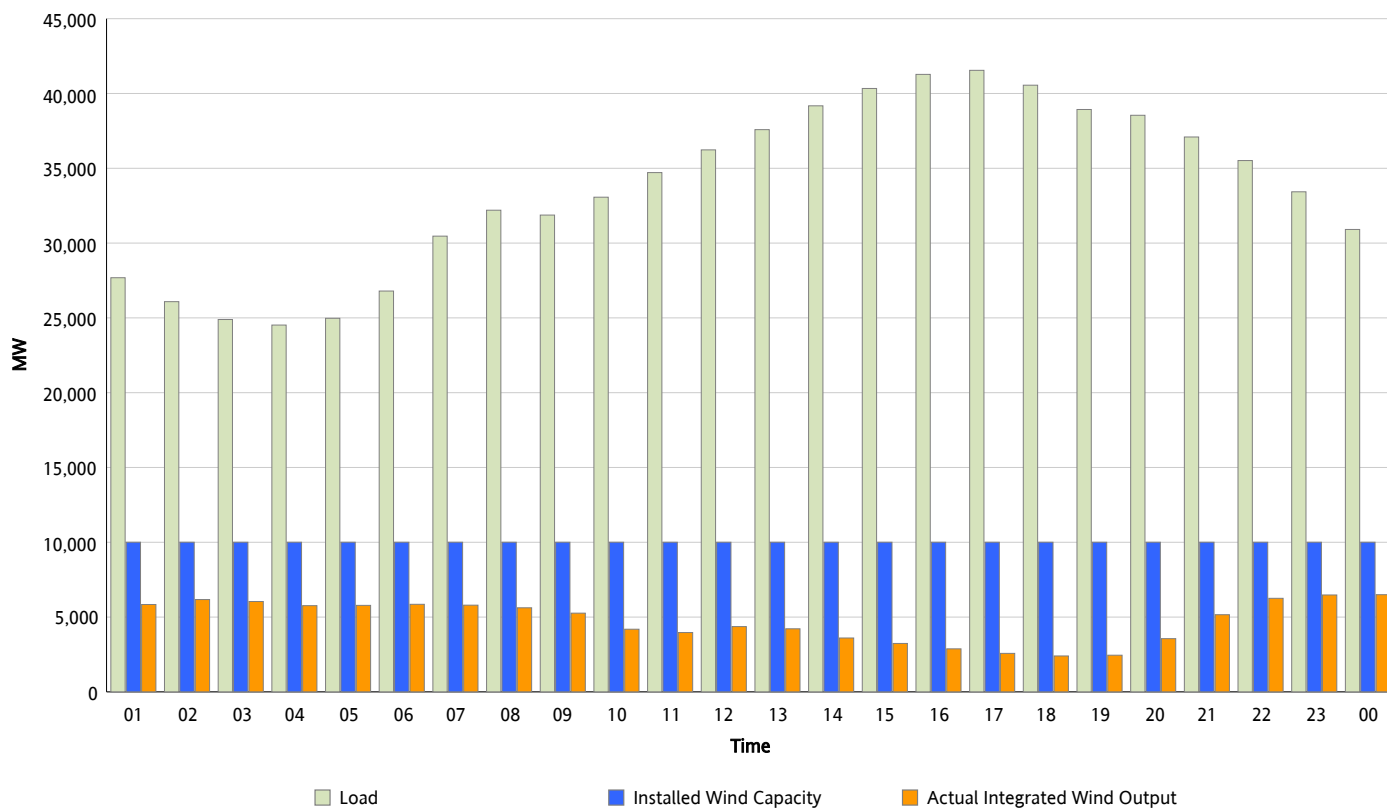


ERCOT Grid Operations

Wind Integration Report : 11/02/2012

Peak Load	41,548 MW
Load Peak Hour (HE)	17
Wind Over Peak	2,574 MW
Wind Record 06/19/12	8,368 MW
Max Wind Value*	6,593 MW
Wind Peak Time	23:14
Wind Integration %	20.9 %

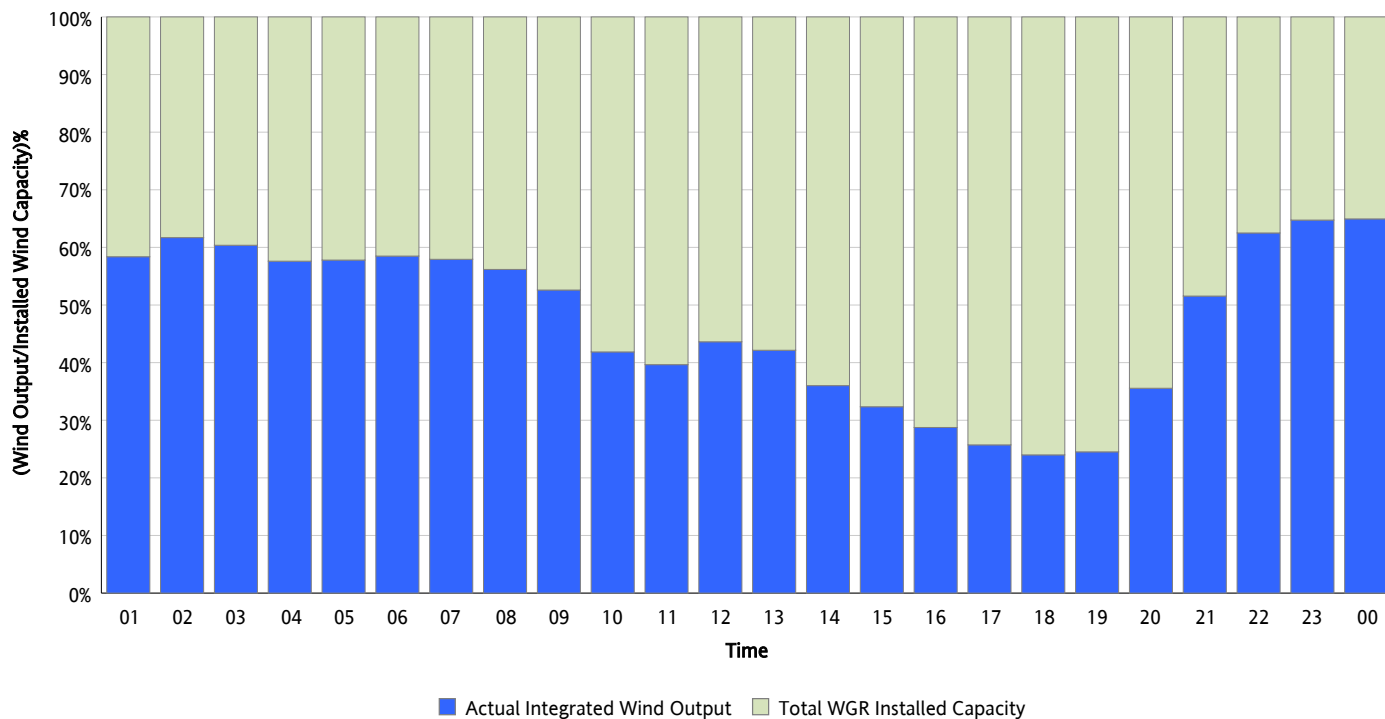
Hourly Average Actual Load vs. Actual Wind Output
11/02/2012



* Wind Record and Wind Max represent instantaneous values and the rest of the values are integrated over the hour

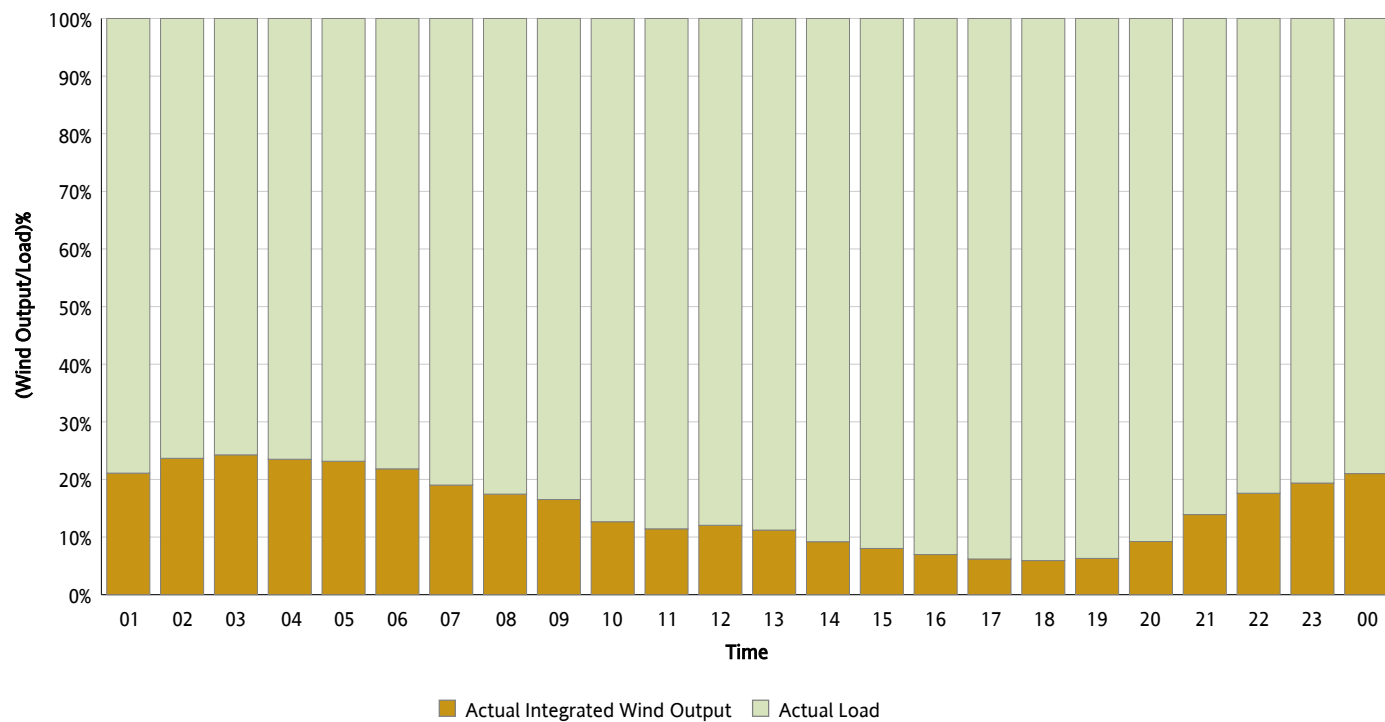
Actual Wind Output as a Percentage of the Total Installed Wind Capacity

11/02/2012



Actual Wind Output as a Percentage of the ERCOT Load

11/02/2012



ERCOT Load vs. Actual Wind Output

10/26/2012 - 11/02/2012

